



WM. E. HAY STETTLER SECONDARY CAMPUS

<https://wmehay.clearview.ab.ca/>

OUR SCHOOL

- 663 students Grades 7–12
- 37 full time teachers / 12 support staff
- 2 Family School Liaisons (FSL)
- 1 Family Wellness Facilitator
- Shared Resource Officer
- Technology incorporation
- Strong Athletics
- Strong CTS programming

OUR COMMUNITY

- Agricultural Based
- Entrepreneurial and Industrial (Oil and Natural Gas Focus)
- Strong Fine Arts (Theatre, Music, Art & Dance)
- Service Oriented



SCHOOL MISSION

Ignite Your Flame

To create a community of learners where everyone has hope and opportunity and their aspirations are realized

In 2022, our staff and students engaged in work to reflect, revisit and renew our beliefs around education after the COVID-19 Pandemic.

Watch our story [here](#).

PROGRAM HIGHLIGHTS

- Teacher Advisory Program (TA)
- Sr. High Math Enhancement
- Jr. High Numeracy/Literacy Foundations
- Dual Credit Courses
- Off Campus Education (Work Experience, RAP, Green Certificate)
- Fine Arts
- CTS/CTF
- Student Graduate Skills Portfolios
- Student Learning Conferences (SLC's)
- Chemistry 20/30 Combination class
- Athletics



CHARACTER EDUCATION, WHOLE CHILD DEVELOPMENT



ATHLETICS & EXTRA-CURRICULAR PROGRAMMING



SUMMARY AEAM RESULTS

Assurance Domain	Measure	William E Hay Composite High			Alberta			Measure Evaluation		
		Current Result	Prev Year Result	Prev 3 Year Average	Current Result	Prev Year Result	Prev 3 Year Average	Achievement	Improvement	Overall
Student Growth and Achievement	Student Learning Engagement	81.3	86.3	83.7	83.7	84.4	84.8	n/a	Maintained	n/a
	Citizenship	82.1	76.1	76.0	79.4	80.3	80.9	Very High	Improved	Excellent
	3-year High School Completion	88.9	84.8	89.3	80.4	80.7	82.4	High	Maintained	Good
	5-year High School Completion	93.5	94.9	90.5	88.1	88.6	87.3	Very High	Maintained	Excellent
	PAT9: Acceptable	69.0	69.5	69.5	62.5	62.6	62.6	Intermediate	Maintained	Acceptable
	PAT9: Excellence	12.1	14.0	14.0	15.4	15.5	15.5	Low	Maintained	Issue
	Diploma: Acceptable	81.9	79.2	79.2	81.5	80.3	80.3	Intermediate	Maintained	Acceptable
	Diploma: Excellence	12.8	15.1	15.1	22.6	21.2	21.2	Intermediate	Maintained	Acceptable
Teaching & Leading	Education Quality	87.1	89.2	86.7	87.6	88.1	88.6	Intermediate	Maintained	Acceptable
Learning Supports	Welcoming, Caring, Respectful and Safe Learning Environments (WCRSLE)	84.3	84.9	83.3	84.0	84.7	85.4	n/a	Maintained	n/a
	Access to Supports and Services	85.5	88.0	85.9	79.9	80.6	81.1	n/a	Maintained	n/a
Governance	Parental Involvement	79.0	80.3	74.2	79.5	79.1	78.9	High	Maintained	Good



SUMMARY AEAM FNMI RESULTS

Assurance Domain	Measure	William E Hay Composite High (FNMI)			Alberta (FNMI)			Measure Evaluation		
		Current Result	Prev Year Result	Prev 3 Year Average	Current Result	Prev Year Result	Prev 3 Year Average	Achievement	Improvement	Overall
Student Growth and Achievement	Student Learning Engagement	n/a	n/a	n/a	n/a	n/a	n/a	n/a	n/a	n/a
	Citizenship	n/a	n/a	n/a	n/a	n/a	n/a	n/a	n/a	n/a
	3-year High School Completion	90.0	77.8	77.8	58.6	57.0	59.5	Very High	Maintained	Excellent
	5-year High School Completion	*	*	69.8	69.4	71.3	69.1	*	*	*
	PAT9: Acceptable	79.2	81.3	81.3	41.4	39.4	39.4	High	Maintained	Good
	PAT9: Excellence	8.3	9.4	9.4	6.1	5.3	5.3	Very Low	Maintained	Concern
	Diploma: Acceptable	87.5	62.5	62.5	76.9	74.8	74.8	High	Improved	Good
	Diploma: Excellence	4.2	25.0	25.0	11.8	11.3	11.3	Very Low	Declined	Concern
Teaching & Leading	Education Quality	n/a	n/a	n/a	n/a	n/a	n/a	n/a	n/a	n/a
Learning Supports	Welcoming, Caring, Respectful and Safe Learning Environments (WCRSLE)	n/a	n/a	n/a	n/a	n/a	n/a	n/a	n/a	n/a
	Access to Supports and Services	n/a	n/a	n/a	n/a	n/a	n/a	n/a	n/a	n/a
Governance	Parental Involvement	n/a	n/a	n/a	n/a	n/a	n/a	n/a	n/a	n/a



SPRING 2024 SUPPLEMENTAL ALBERTA EDUCATION ASSURANCE MEASURES - OVERALL SUMMARY

Measure	William E Hay Composite High			Alberta			Measure Evaluation		
	Current Result	Prev Year Result	Prev 3 Year Average	Current Result	Prev Year Result	Prev 3 Year Average	Achievement	Improvement	Overall
Diploma Exam Participation Rate (4+ Exams)	43.1	0.9	n/a	52.7	3.5	n/a	Intermediate	n/a	n/a
Drop Out Rate	1.9	1.3	0.9	2.5	2.5	2.4	Very High	Declined	Good
In-Service Jurisdiction Needs	78.3	90.4	85.1	81.1	82.2	83.0	Low	Maintained	Issue
Lifelong Learning	88.1	78.3	79.5	79.9	80.4	80.7	Very High	Improved	Excellent
Program of Studies	89.7	90.7	87.7	82.8	82.9	82.9	Very High	Maintained	Excellent
Program of Studies - At Risk Students	85.1	88.0	85.1	80.6	81.2	81.5	Intermediate	Maintained	Acceptable
Rutherford Scholarship Eligibility Rate	62.5	68.9	67.0	70.7	71.9	70.0	Intermediate	Maintained	Acceptable
Safe and Caring	87.5	89.7	87.6	87.1	87.5	88.1	High	Maintained	Good
Satisfaction with Program Access	82.2	78.9	77.4	71.9	72.9	72.7	High	Improved	Good
School Improvement	83.1	86.8	78.9	75.8	75.2	74.7	Very High	Improved	Excellent
Transition Rate (6 yr)	57.2	64.7	62.1	60.1	59.7	60.0	Intermediate	Maintained	Acceptable
Work Preparation	87.9	82.1	77.8	82.8	83.1	84.0	Very High	Improved	Excellent



ACADEMIC ACHIEVEMENT: PAT RESULTS

Results:

- English Language Arts 9: Acceptable – 14.5% above Provincial, Standard of Excellence – 3.3% below Provincial
- Mathematics 9: Acceptable – 11.9% above Provincial, Standard of Excellence – 1.3% below Provincial
- Science 9: Acceptable – 1.2% above Provincial, Standard of Excellence – 6.2% below Provincial
- Social Studies 9: Acceptable – 4.2% below Provincial, Standard of Excellence – 6.4% below Provincial

Strategies:

- Keep offering the Math 9–3 program
- More standard of excellence practice
- Focus on Literacy based strategies in all classes
- Teachers participate in division PD for improving Math PAT style questions

PAT Course by Course Results by Number Enrolled.													
		Results (in percentages)										Target	
		2020		2021		2022		2023		2024		2024	
		A	E	A	E	A	E	A	E	A	E	A	E
English Language Arts 9	School	n/a	n/a	n/a	n/a	83.1	9.6	74.7	10.8	84.0	8.5	84	10
	Authority	n/a	n/a	n/a	n/a	74.1	8.2	74.3	13.2	81.1	8.8		
	Province	n/a	n/a	n/a	n/a	69.6	12.9	71.4	13.4	69.5	11.8		
K&E English Language Arts 9	School	n/a	n/a	n/a	n/a	16.7	0.0	*	*	n/a	n/a	50	6
	Authority	n/a	n/a	n/a	n/a	16.7	0.0	44.4	0.0	*	*		
	Province	n/a	n/a	n/a	n/a	50.5	5.0	50.2	5.7	49.6	5.6		
Mathematics 9	School	n/a	n/a	n/a	n/a	61.4	12.9	78.1	15.6	64.6	12.7	65	14
	Authority	n/a	n/a	n/a	n/a	51.5	9.1	66.9	17.7	61.5	14.6		
	Province	n/a	n/a	n/a	n/a	53.0	16.7	54.4	13.5	52.7	14.0		
K&E Mathematics 9	School	n/a	n/a	n/a	n/a	56.0	4.0	79.2	29.2	81.3	31.3	81	31
	Authority	n/a	n/a	n/a	n/a	59.3	7.4	71.0	29.0	75.0	20.8		
	Province	n/a	n/a	n/a	n/a	55.3	11.1	52.7	11.3	52.2	9.9		
Science 9	School	n/a	n/a	n/a	n/a	81.6	27.6	76.8	19.5	68.8	14.6	70	20
	Authority	n/a	n/a	n/a	n/a	79.3	22.0	68.2	18.5	74.8	15.9		
	Province	n/a	n/a	n/a	n/a	68.0	22.6	66.3	20.1	67.6	20.8		
K&E Science 9	School	n/a	n/a	n/a	n/a	25.0	0.0	*	*	n/a	n/a	52	9
	Authority	n/a	n/a	n/a	n/a	25.0	0.0	44.4	0.0	*	*		
	Province	n/a	n/a	n/a	n/a	57.8	11.0	52.9	10.9	52.3	8.9		
Social Studies 9	School	n/a	n/a	n/a	n/a	61.1	12.2	53.7	8.5	56.3	9.4	60	10
	Authority	n/a	n/a	n/a	n/a	63.6	11.0	51.7	12.6	60.3	11.3		
	Province	n/a	n/a	n/a	n/a	60.8	17.2	58.4	15.9	60.5	15.8		
K&E Social Studies 9	School	n/a	n/a	n/a	n/a	12.5	0.0	*	*	n/a	n/a	50	11
	Authority	n/a	n/a	n/a	n/a	12.5	0.0	30.0	0.0	*	*		
	Province	n/a	n/a	n/a	n/a	53.2	14.1	49.6	10.6	50.4	11.3		

FNMI ACADEMIC ACHIEVEMENT: PAT RESULTS

Results:

- English Language Arts 9: Acceptable – 50.5% above Provincial, Standard of Excellence – 4.7% below Provincial
- Mathematics 9: not enough data to report
- Science 9: Acceptable – 37.3% above Provincial, Standard of Excellence – 8.5% below Provincial
- Social Studies 9: Acceptable – 44.3% above Provincial, Standard of Excellence – 6.3% below Provincial



Strategies:

- Keep offering the Math 9–3 program
- More standard of excellence practice
- Focus on Literacy based strategies in all classes
- Teachers participate in division PD for improving Math PAT style questions
- Infuse FNMI perspectives where appropriate

Course	Measure	William E Hay Composite High (FNMI)					Alberta (FNMI)	
		Achievement	Improvement	Overall	2024		2024	
					N	%	N	%
English Language Arts 9	Acceptable Standard	Very High	Improved	Excellent	6	100.0	4,465	49.5
	Standard of Excellence	Very Low	Maintained	Concern	6	0.0	4,465	4.7
K&E English Language Arts 9	Acceptable Standard	n/a	n/a	n/a	n/a	n/a	388	42.8
	Standard of Excellence	n/a	n/a	n/a	n/a	n/a	388	4.9
Mathematics 9	Acceptable Standard	*	*	*	5	*	4,361	28.7
	Standard of Excellence	*	*	*	5	*	4,361	4.8
K&E Mathematics 9	Acceptable Standard	*	*	*	1	*	485	43.7
	Standard of Excellence	*	*	*	1	*	485	6.2
Science 9	Acceptable Standard	Very High	Declined	Good	6	83.3	4,477	46.0
	Standard of Excellence	Very Low	Declined	Concern	6	0.0	4,477	8.5
K&E Science 9	Acceptable Standard	n/a	n/a	n/a	n/a	n/a	373	46.6
	Standard of Excellence	n/a	n/a	n/a	n/a	n/a	373	7.2
Social Studies 9	Acceptable Standard	Very High	Improved	Excellent	6	83.3	4,498	39.0
	Standard of Excellence	Very Low	Maintained	Concern	6	0.0	4,498	6.3
K&E Social Studies 9	Acceptable Standard	n/a	n/a	n/a	n/a	n/a	351	46.2
	Standard of Excellence	n/a	n/a	n/a	n/a	n/a	351	9.4

ACADEMIC ACHIEVEMENT: DIPLOMA RESULTS



Results:

- ELA 30-1: Acceptable – 1.3% above, Excellence – 6.9% below Provincial
- ELA 30-2: Acceptable – 7.5% above, Excellence – 1% below Provincial
- Math 30-1: Acceptable – 12.1% below, Excellence – 18.2% below Provincial
- Math 30-2: Acceptable – 7.5% below, Excellence – 10.5% below Provincial
- SST 30-1: Acceptable – 3.1% below, Excellence – 15.1% below Provincial
- SST 30-2: Acceptable – 6.5% above, Excellence – 7.9% below Provincial
- Biology 30: Acceptable – 6.7% above, Excellence – 9.2% below Provincial
- Chemistry 30: Acceptable – 5.1% below, Excellence – 9.1% below Provincial
- Physics 30: Acceptable – 2.5% below, Excellence – 17% below Provincial
- Science 30: Acceptable – 2.9% above, Excellence – 1.7% above Provincial

Strategies:

- Revisit reassessment practices & promote diploma prep programs
- Collaborative Authority wide strategy meetings for Mathematics teachers and English Language Arts teachers

Diploma Exam Course by Course Results by Students Writing.													
		Results (in percentages)										Target	
		2020		2021		2022		2023		2024		2024	
		A	E	A	E	A	E	A	E	A	E	A	E
English Lang Arts 30-1	School	n/a	n/a	n/a	n/a	72.9	12.5	86.8	9.4	85.5	3.2	85	8
	Authority	n/a	n/a	n/a	n/a	77.4	9.7	82.9	7.9	85.7	4.8		
	Province	n/a	n/a	n/a	n/a	78.8	9.4	83.7	10.5	84.2	10.1		
English Lang Arts 30-2	School	n/a	n/a	n/a	n/a	83.3	16.7	91.5	10.6	93.2	11.9	93	12
	Authority	n/a	n/a	n/a	n/a	87.9	12.1	89.5	9.3	95.2	13.3		
	Province	n/a	n/a	n/a	n/a	80.8	12.3	86.2	12.7	85.7	12.9		
Mathematics 30-1	School	n/a	n/a	n/a	n/a	22.2	0.0	48.3	10.3	63.3	16.7	68	20
	Authority	n/a	n/a	n/a	n/a	20.0	0.0	35.9	7.7	61.5	23.1		
	Province	n/a	n/a	n/a	n/a	63.6	23.0	70.8	29.0	75.4	34.9		
Mathematics 30-2	School	n/a	n/a	n/a	n/a	27.3	0.0	85.7	28.6	63.4	4.9	68	10
	Authority	n/a	n/a	n/a	n/a	34.8	0.0	55.3	12.8	60.3	6.3		
	Province	n/a	n/a	n/a	n/a	61.5	11.8	71.1	15.2	70.9	15.4		
Social Studies 30-1	School	n/a	n/a	n/a	n/a	66.7	16.7	82.9	4.9	82.1	3.6	85	10
	Authority	n/a	n/a	n/a	n/a	73.1	19.2	83.1	5.1	84.8	7.6		
	Province	n/a	n/a	n/a	n/a	81.5	15.8	83.5	15.9	85.2	18.7		
Social Studies 30-2	School	n/a	n/a	n/a	n/a	72.0	8.0	81.4	8.5	84.1	4.8	84	8
	Authority	n/a	n/a	n/a	n/a	72.1	11.6	79.4	7.2	80.0	5.9		
	Province	n/a	n/a	n/a	n/a	72.5	13.2	78.1	12.3	77.6	12.7		
Biology 30	School	n/a	n/a	n/a	n/a	75.0	33.3	90.9	27.3	89.8	24.5	89	25
	Authority	n/a	n/a	n/a	n/a	68.0	32.0	80.8	19.2	83.8	17.5		
	Province	n/a	n/a	n/a	n/a	74.3	25.2	82.7	32.8	83.1	33.7		
Chemistry 30	School	n/a	n/a	n/a	n/a	54.8	19.4	63.0	21.7	77.8	28.9	78	30
	Authority	n/a	n/a	n/a	n/a	46.3	14.6	59.7	16.1	74.2	25.8		
	Province	n/a	n/a	n/a	n/a	77.1	31.1	80.5	37.0	82.9	38.0		
Physics 30	School	n/a	n/a	n/a	n/a	n/a	n/a	73.3	40.0	82.6	26.1	85	34
	Authority	n/a	n/a	n/a	n/a	n/a	n/a	69.7	27.3	79.2	25.0		
	Province	n/a	n/a	n/a	n/a	78.5	34.6	82.3	39.9	85.1	43.1		
Science 30	School	n/a	n/a	n/a	n/a	n/a	n/a	72.7	18.2	84.2	26.3	84	26
	Authority	n/a	n/a	n/a	n/a	n/a	n/a	75.0	12.5	77.3	22.7		
	Province	n/a	n/a	n/a	n/a	75.7	17.2	79.4	23.1	81.3	24.6		



FNMI ACADEMIC ACHIEVEMENT: DIPLOMA RESULTS

Results:

- ELA 30-2: Acceptable – 2.7% below, Excellence – 10.8% below Provincial
- SST 30-2: Acceptable – 10.4% above, Excellence – 6.6% below Provincial

*Not enough students wrote for data for other courses.

Strategies:

- Revisit reassessment practices, promote Rock the Diploma
- Collaborative Authority wide strategy meetings for Mathematics teachers and English Language Arts teachers
- Infuse FNMI perspectives where appropriate

Course	Measure	William E Hay Composite High (FNMI)					Alberta (FNMI)	
		Achievement	Improvement	Overall	2024		2024	
					N	%	N	%
English Lang Arts 30-1	Diploma Examination Acceptable Standard	*	*	*	2	*	1,402	81.7
	Diploma Examination Standard of Excellence	*	*	*	2	*	1,402	6.9
English Lang Arts 30-2	Diploma Examination Acceptable Standard	Low	n/a	n/a	6	83.3	2,010	86.0
	Diploma Examination Standard of Excellence	Very Low	n/a	n/a	6	0.0	2,010	10.8
Mathematics 30-1	Diploma Examination Acceptable Standard	*	*	*	1	*	634	64.4
	Diploma Examination Standard of Excellence	*	*	*	1	*	634	17.0
Mathematics 30-2	Diploma Examination Acceptable Standard	*	*	*	3	*	785	64.8
	Diploma Examination Standard of Excellence	*	*	*	3	*	785	10.1
Social Studies 30-1	Diploma Examination Acceptable Standard	*	*	*	2	*	1,071	79.1
	Diploma Examination Standard of Excellence	*	*	*	2	*	1,071	10.6
Social Studies 30-2	Diploma Examination Acceptable Standard	Intermediate	n/a	n/a	6	83.3	2,091	72.9
	Diploma Examination Standard of Excellence	Very Low	n/a	n/a	6	0.0	2,091	6.6
Biology 30	Diploma Examination Acceptable Standard	*	*	*	1	*	1,041	72.8
	Diploma Examination Standard of Excellence	*	*	*	1	*	1,041	17.0
Chemistry 30	Diploma Examination Acceptable Standard	*	*	*	1	*	614	78.2
	Diploma Examination Standard of Excellence	*	*	*	1	*	614	23.5
Physics 30	Diploma Examination Acceptable Standard	*	*	*	1	*	280	80.4
	Diploma Examination Standard of Excellence	*	*	*	1	*	280	23.2
Science 30	Diploma Examination Acceptable Standard	*	*	*	1	*	480	78.1
	Diploma Examination Standard of Excellence	*	*	*	1	*	480	18.5

HIGH SCHOOL COMPLETION - 3 AND 5 YEAR OVERALL

Results:

3-year - increased 4.1%, above provincial overall by 8.5%

5-year - decreased 1.4%, above provincial overall by 5.4%

Strategies:

- Continue to track and monitor to ensure all Gr. 12 student's are on track to graduate at the end of 3 years
- Continue TA discussions relating to successful graduation



	William E Hay Composite High										Measure Evaluation			Alberta									
	2019		2020		2021		2022		2023					2019		2020		2021		2022		2023	
	N	%	N	%	N	%	N	%	N	%	Achievement	Improvement	Overall	N	%	N	%	N	%	N	%	N	%
3 Year Completion	121	90.3	111	91.1	129	92.0	111	84.8	114	88.9	High	Maintained	Good	45,354	80.3	46,245	83.4	47,675	83.2	48,340	80.7	49,297	80.4
4 Year Completion	136	85.3	121	90.9	110	93.4	129	92.8	108	91.9	Very High	Maintained	Excellent	44,980	84.0	45,351	85.0	46,242	87.1	47,660	86.5	48,296	85.1
5 Year Completion	127	89.5	136	85.2	120	91.5	109	94.9	129	93.5	Very High	Maintained	Excellent	44,988	85.3	44,972	86.2	45,344	87.1	46,238	88.6	47,659	88.1

FNMI HIGH SCHOOL COMPLETION - 3 AND 5 YEAR OVERALL

Results:

3-year - increased 12.2%, above provincial overall by 31.4%

Strategies:

- Continue offering unique recognition at the Graduation celebration in the spring
- Continue to track and monitor to ensure all Gr. 12 student's are on track to graduate at the end of 3 years
- Continue TA discussions relating to successful graduation



	William E Hay Composite High (FNMI)										Measure Evaluation			Alberta (FNMI)									
	2019		2020		2021		2022		2023		Achievement	Improvement	Overall	2019		2020		2021		2022		2023	
	N	%	N	%	N	%	N	%	N	%				N	%	N	%	N	%	N	%	N	%
3 Year Completion	8	89.2	1	*	3	*	9	77.8	10	90.0	Very High	Maintained	Excellent	3,750	55.9	3,814	62.0	3,972	59.5	3,943	57.0	4,222	58.6
4 Year Completion	9	67.1	8	79.5	1	*	3	*	8	100.0	Very High	Improved	Excellent	3,524	64.2	3,670	63.6	3,729	68.6	3,936	65.8	3,902	65.3
5 Year Completion	4	*	10	60.9	8	78.7	1	*	3	*	*	*	*	3,407	65.0	3,469	68.1	3,593	68.0	3,719	71.3	3,909	69.4

CITIZENSHIP

Results:

- increased 6%, above provincial overall by 2.7%

Strategies:

- Focus on citizenship in TA
 - Community Clean Up project
 - Food bank donations
 - WaterFirst.ngo project in partnership with SES
 - Partnership with Heartland Youth Center for Wm. E. Hay Student to be volunteer mentors for SES students during the school day
 - Partner with Points West for the Adopt a Senior Program



Percentage of teachers, parents and students who are satisfied that students model the characteristics of active citizenship.

	School										Measure Evaluation			Province									
	2020		2021		2022		2023		2024		Achievement	Improvement	Overall	2020		2021		2022		2023		2024	
	N	%	N	%	N	%	N	%	N	%				N	%	N	%	N	%	N	%	N	%
Overall	256	76.2	240	73.4	258	75.8	250	76.1	285	82.1	Very High	Improved	Excellent	264,413	83.3	230,843	83.2	249,770	81.4	257,231	80.3	265,100	79.4
Parent	35	74.1	23	67.3	17	67.9	39	60.5	33	79.8	High	Improved	Good	36,891	82.4	30,905	81.4	31,689	80.4	31,869	79.4	33,217	78.7
Student	194	66.3	186	63.9	207	71.5	173	75.3	219	73.2	Very High	Maintained	Excellent	193,577	73.8	169,741	74.1	187,120	72.1	193,015	71.3	199,816	69.6
Teacher	27	88.1	31	89.0	34	88.2	38	92.6	33	93.3	High	Maintained	Good	33,945	93.6	30,197	94.1	30,961	91.7	32,347	90.3	32,067	89.8

STUDENT LEARNING ENGAGEMENT

Results:

- declined 5%, below provincial overall by 2.4%

Strategies:

- Continue building on the communication plan to engage all stakeholders in the education of students at school.
- Administration team working closely with teachers to ensure that students engagement is at the highest level of priority in their teaching practice
- Team Leaders are working with Stu Henry, Henry Executive Coaching



	William E Hay Composite High										Measure Evaluation			Alberta									
	2020		2021		2022		2023		2024					2020		2021		2022		2023		2024	
	N	%	N	%	N	%	N	%	N	%	Achievement	Improvement	Overall	N	%	N	%	N	%	N	%	N	%
Overall	n/a	n/a	241	79.2	258	81.0	250	86.3	286	81.3	n/a	Maintained	n/a	n/a	n/a	230,956	85.6	249,740	85.1	257,214	84.4	265,079	83.7
Parent	n/a	n/a	24	76.4	17	80.4	39	86.1	33	80.6	n/a	Maintained	n/a	n/a	n/a	30,994	89.0	31,694	88.7	31,862	87.3	33,209	86.7
Student	n/a	n/a	186	67.7	207	70.5	173	74.7	220	69.5	n/a	Maintained	n/a	n/a	n/a	169,789	71.8	187,102	71.3	193,029	70.9	199,823	69.3
Teacher	n/a	n/a	31	93.5	34	92.1	38	98.2	33	93.9	n/a	Maintained	n/a	n/a	n/a	30,173	96.0	30,944	95.5	32,323	95.1	32,047	95.1

WELCOMING, CARING, RESPECTFUL AND SAFE

Results:

- declined 0.6%, above provincial overall by 0.3%

Strategies:

- In person Open House, interviews, Student Learner Conversations, etc.
- Encouraging staff communication with parents and families.
- Administration of the school continue to welcome students every morning at the school doors



	William E Hay Composite High										Measure Evaluation			Alberta									
	2020		2021		2022		2023		2024		Achievement	Improvement	Overall	2020		2021		2022		2023		2024	
	N	%	N	%	N	%	N	%	N	%				N	%	N	%	N	%	N	%	N	%
Overall	n/a	n/a	241	81.6	258	81.6	250	84.9	285	84.3	n/a	Maintained	n/a	n/a	n/a	231,091	87.8	249,941	86.1	257,391	84.7	265,321	84.0
Parent	n/a	n/a	24	80.5	17	77.9	39	76.8	33	82.5	n/a	Maintained	n/a	n/a	n/a	30,980	88.2	31,715	86.9	31,885	85.6	33,232	85.3
Student	n/a	n/a	186	70.4	207	76.7	173	82.2	219	78.6	n/a	Maintained	n/a	n/a	n/a	169,900	79.8	187,258	77.7	193,156	76.6	200,020	75.2
Teacher	n/a	n/a	31	94.0	34	90.1	38	95.8	33	91.7	n/a	Maintained	n/a	n/a	n/a	30,211	95.3	30,968	93.6	32,350	92.0	32,069	91.6

ACCESS TO SUPPORTS & SERVICES

Results:

- declined 2.5%, above provincial overall 5.6%

Strategies:

- Continue working with our Student Services Team and FSL on providing services to students in need.
- Work with Ms. Mazankowski to ensure families in need are getting the additional support required
- Continue to work with the Circle of Services in the community



	William E Hay Composite High										Alberta												
	2020		2021		2022		2023		2024		Measure Evaluation			2020		2021		2022		2023		2024	
	N	%	N	%	N	%	N	%	N	%	Achievement	Improvement	Overall	N	%	N	%	N	%	N	%	N	%
Overall	n/a	n/a	241	81.8	258	83.9	250	88.0	285	85.5	n/a	Maintained	n/a	n/a	n/a	230,761	82.6	249,570	81.6	256,994	80.6	264,733	79.9
Parent	n/a	n/a	24	75.0	17	75.3	39	75.6	33	82.3	n/a	Maintained	n/a	n/a	n/a	30,936	78.9	31,684	77.4	31,847	75.7	33,177	75.4
Student	n/a	n/a	186	72.9	207	83.0	173	89.3	219	80.3	n/a	Declined	n/a	n/a	n/a	169,631	80.2	186,935	80.1	192,805	79.9	199,516	78.7
Teacher	n/a	n/a	31	97.4	34	93.5	38	98.9	33	93.9	n/a	Maintained	n/a	n/a	n/a	30,194	88.7	30,951	87.3	32,342	86.2	32,040	85.6

PARENTAL INVOLVEMENT

Results:

- declined 1.3%, below provincial average by 0.5%

Strategies:

- In person Student Learning Conferences (for all students)
- Promote School Council participation both in person and now virtually
- Frequent and regular communication home to parents by all staff



	William E Hay Composite High										Measure Evaluation			Alberta									
	2020		2021		2022		2023		2024					2020		2021		2022		2023		2024	
	N	%	N	%	N	%	N	%	N	%	Achievement	Improvement	Overall	N	%	N	%	N	%	N	%	N	%
Overall	62	83.7	55	78.1	51	68.0	77	80.3	66	79.0	High	Maintained	Good	70,377	81.8	60,919	79.5	62,412	78.8	63,935	79.1	64,949	79.5
Parent	35	69.0	24	58.1	17	48.1	39	66.5	33	72.5	High	Improved	Good	36,556	73.9	30,886	72.2	31,598	72.3	31,720	72.5	33,070	74.4
Teacher	27	98.5	31	98.0	34	87.9	38	94.1	33	85.4	Low	Maintained	Issue	33,821	89.6	30,033	86.8	30,814	85.2	32,215	85.7	31,879	84.6

EDUCATION QUALITY

Results:

- declined 2.1%, below provincial results 0.5%

Strategies:

- Promote the programs we have available in our school
- Use Social Media to celebrate our classroom experiences
- Intentional professional development
- Continue to offer range of option courses for students

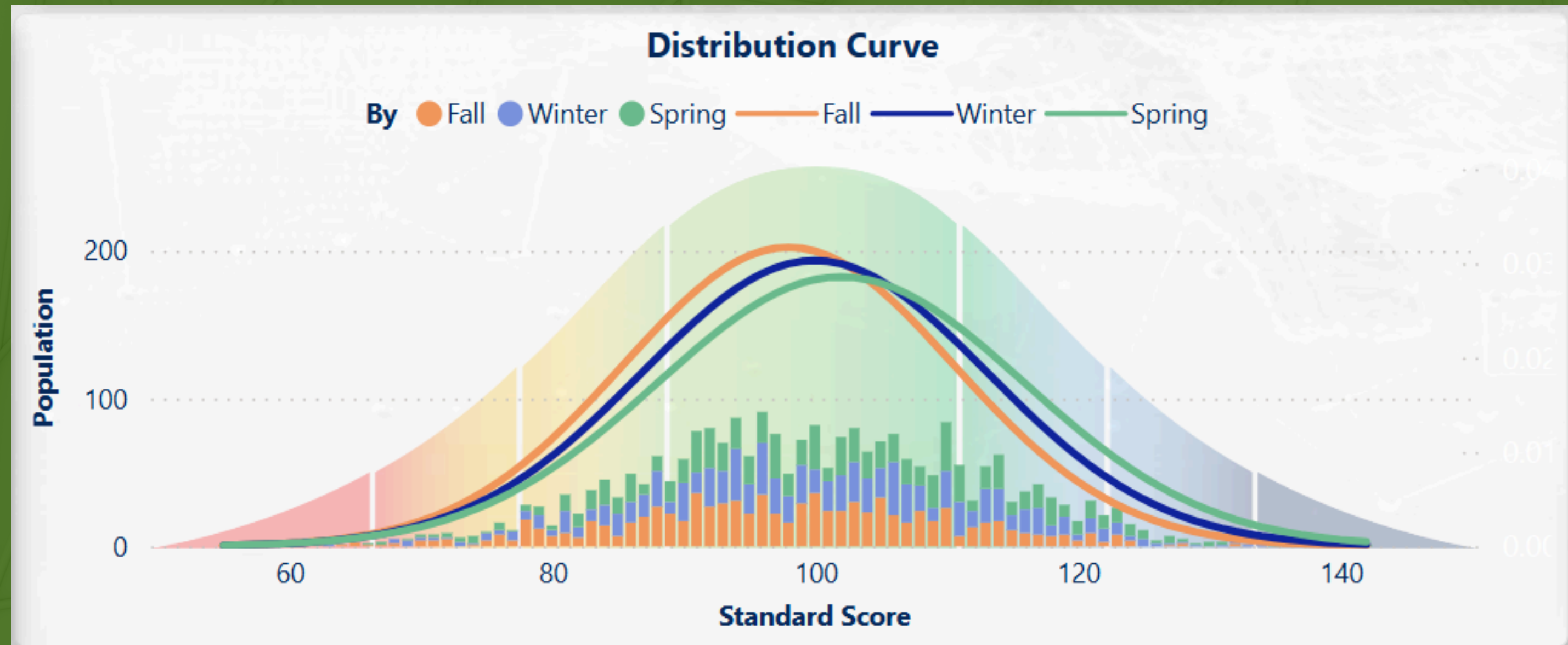


	William E Hay Composite High										Measure Evaluation			Alberta									
	2020		2021		2022		2023		2024					2020		2021		2022		2023		2024	
	N	%	N	%	N	%	N	%	N	%	Achievement	Improvement	Overall	N	%	N	%	N	%	N	%	N	%
Overall	257	83.5	242	81.5	258	84.1	250	89.2	286	87.1	Intermediate	Maintained	Acceptable	264,623	90.3	230,814	89.6	249,532	89.0	257,584	88.1	265,643	87.6
Parent	35	78.0	24	74.3	17	77.5	39	82.3	33	82.1	High	Maintained	Good	36,907	86.7	31,024	86.7	31,728	86.1	31,890	84.4	33,250	83.8
Student	195	80.5	187	75.0	207	81.8	173	88.4	220	81.1	Very Low	Declined	Concern	193,763	87.8	169,589	86.3	186,834	85.9	193,343	85.7	200,322	84.9
Teacher	27	92.0	31	95.2	34	93.1	38	96.9	33	98.0	Very High	Maintained	Excellent	33,953	96.4	30,201	95.7	30,970	95.0	32,351	94.4	32,071	93.9

ACADEMIC ACHIEVEMENT - LOCAL DATA

3T Testing

- Shows the growth of student Literacy skills
- The testing shows our students have shifted to a higher Standard Score by the Spring evaluation. This meets our goal.



LEARNING DISRUPTION

To address identified gaps in student academic performance, we have expanded the implementation of the REWARDS program to include all students in grades 7 through 9.

“Developed by award-winning education authors and literacy experts, REWARDS® is a series of short-term reading and writing intervention solutions specifically designed for struggling learners in grades 4–12. The REWARDS suite is a powerful, research-validated and specialized program for adolescent students who struggle reading long, multisyllabic words and comprehending content-area text. With explicit, teacher-led instruction, this intervention gives students new skills to become successful readers.”

<https://www.voyagersopris.com/products/reading/rewards/overview>



FNMI SUCCESS

- All staff participate in FNMI teachings during each staff meeting.
- Staff have updated and improved the bulletin boards to represent FNMI perspectives.
- Recognize our students with FNMI heritage during the Graduation ceremony.
- Teachers are purposefully incorporating more FNMI perspectives in their classroom experiences.

STAFF DEVELOPMENT

- Professional Growth Plans meetings with supervising administrator
- Team Leaders work with Henry Executive Coaching, building capacity as leaders in Peer Coaching, Positive Feeling Tone, Clear Learner Objectives, The Experience Cube, Dearborn's Conscious Teaching, 4 Step Coaching Model, Effective Questioning , Effective Feedback, & Peer Assessment
- Monthly department meetings to investigate strategies for student success
- All staff participate in Crucial Conversation training
- All staff participated in the Collaborative Response Model training
- Division wide Mathematics team collaboration
- Division wide English Language Arts team collaboration



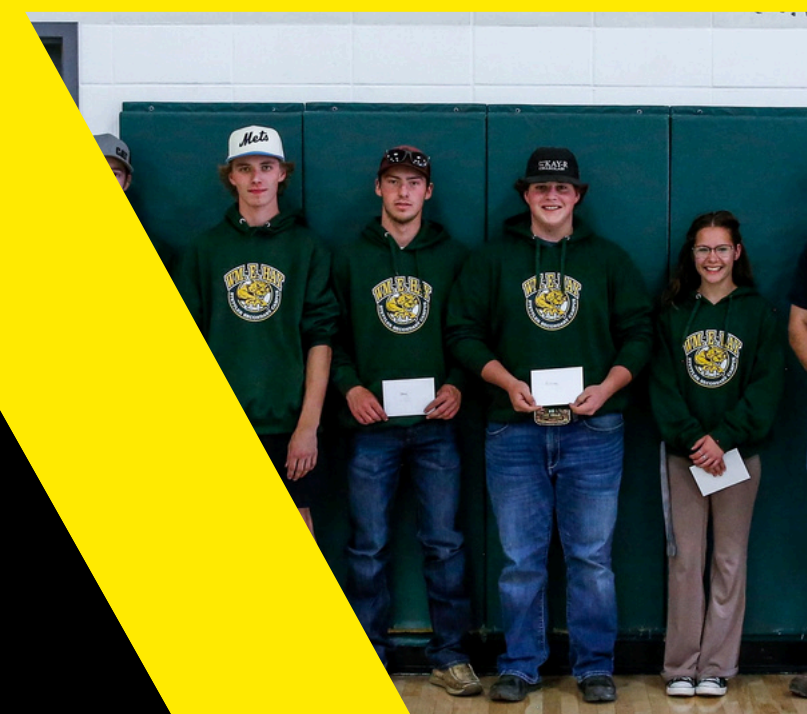
STAKEHOLDER ENGAGEMENT

- School Council meets monthly in person and virtually
- Open House
- Student Learning Conferences
- Weekly emails to parent by administration and all classroom teachers



TRENDS

- Clear expectations of staff and student behaviour.
- Focus on school culture.
- Focus on instructional improvement through instructional leadership.
- Focusing on student and staff mental health and wellness.
- Improved communication between staff and parents.
- Using multigraded TA groupings for Character Development – Development of student understanding of SPARK characteristics.



CHALLENGES

EDUCATION QUALITY:

- Our data shows that there is a significant discrepancy between student perception of education quality and parent and teacher perceptions
- Strategies:
 - Staff working on creating engaging classrooms with feedback from team leaders and administration
 - Team leaders working with Henry Executive Coaching to ensure all lessons are designed with focus on key lessons and include engaging activities

DIPLOMA AND PAT RESULTS:

- % Standard of Excellence in PATS and Dips
- Strategies:
 - Continue focus on communication with parents from the classroom
 - Staff working closely with team leaders to ensure essential learnings are being addressed

GREATEST SUCCESSES

SPARK

- Development of SPARK Framework
 - Common standards, common language, common expectations

EXECUTIVE COACHING

Staff Development with Executive Coach Stu Henry

DISTRIBUTIVE LEADERSHIP

Building of Leadership Capacity of Team Leaders as Instructional Leaders



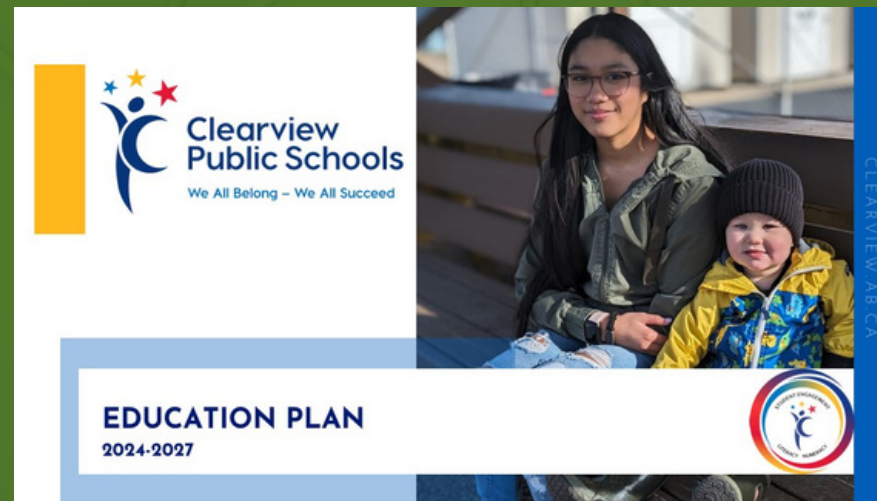
WHAT PEOPLE SAY ABOUT OUR SCHOOL



safe help opportunity different appreciate option grades staff
 classes options teachers staff
 variety minded fun beyond learning parents
 culture sports connection ability
 helpful child possibility inclusion
 guidance school open
 students good friends awesome energy future
 admin needs feels willingness



PLANNING FOR 2024-2027



CLEARVIEW EDUCATION PLAN 2024-2027



WM. E. HAY STETTTLER SECONDARY CAMPUS EDUCATION PLAN 2024-2027



WHAT IS DRIVING CHANGE IN YOUR BUILDING?

We are working on creating an environment where every student is engaged in their education and understands the value of the courses they are taking.

MEET OUR TEAM

MRS. M. SHEPHERD

Principal

mshpherd@clearview.ab.ca



MRS. D. ENYEDY

Vice Principal

denyedy@clearview.ab.ca

MR. FLEISCHHACKER

Vice Principal

dfleischhacker@clearview.ab.ca



MRS. B. FANKHANEL

Vice Principal

bfankhanel@clearview.ab.ca

403-742-3466