

Wm. E. Hay Stettler Secondary Campus and Stettler Outreach Campus

Education Plan 2024-2027



School Profile

Wm. E. Hay Stettler Secondary Campus and Stettler Outreach Campus offer access to a broad array of programming to meet the needs of all students in our community, which is an agricultural town with a strong entrepreneurial and industrial base.

We pride ourselves in the variety and diversity of programming across our two buildings including:

CAREER AND
TECHNOLOGY
STUDIES

FINE ARTS

ATHLETICS

720 Students
Grades 7-12



39 Full Time
Teachers, 18
Support Staff, 2
Family School
Liaisons and a
shared School
Resource Officer



Wm. E. Hay's
Current AERR

5411 50th Ave Stettler, AB

403 742-3466

Vision

Students at Wm. E. Hay will be successful as a result of:

- Quality programs and high expectations.
- Engaging, relevant and rigorous learning experiences inside and outside of the classrooms.
- Technology use that is infused in programs.
- Citizenship experiences that prepare them for life in a rapidly changing civil democratic society.
- The focus of all partners in the school system on student learning and well-being.
- A positive and safe learning environment.
- High teaching standards and practices.
- Communication with Stakeholders
- Personalization



IGNITE YOUR FLAME

Mantra

- **IGNITE YOUR FLAME**

HIGHLIGHTS

Program Highlights ★ Grade 7 & 8 Academies ★ Multigraded Teacher Advisory Program; TA ★ Sr. High Math Enhancement ★ Jr. High Math/Literacy Enhancement time ★ Dual Credit Courses ★ Off Campus Education (Work Experience, RAP, Green Certificate) ★ Fine Arts ★ CTS/CTF ★ Student Graduate Skills Portfolios ★ Student Learning Conferences (SLC's) ★ Chemistry 20/30 Combination class ★ Athletics



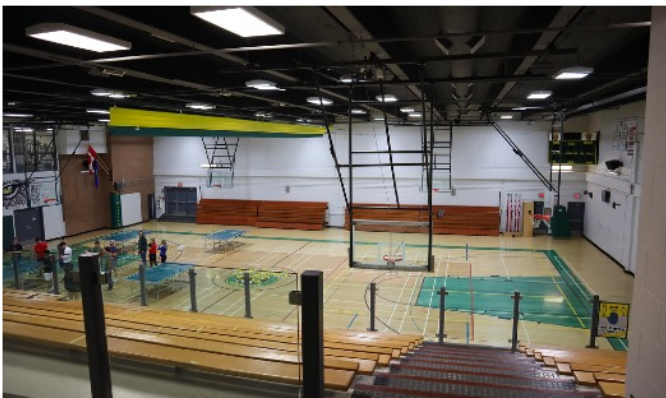
In 2022-2023, our staff and students engaged in work to reflect, revisit and renew our beliefs around education after the COVID-19 Pandemic. Watch our story [here](#).

Athletics and Wellness

Wm. E. Hay and Stettler Outreach School have a number of opportunities for students to explore physical and mental wellness opportunities.

Our Athletics programs span from cross country to track and field, football, volleyball, basketball, badminton, soccer and rugby.

In addition, we have outstanding facilities for students to use during school hours as venues for physical education classes and wellness classes including a fully equipped cardio room and weight room.



Community partnerships are critical in enhancing wrap around supports for students. As the old adage goes, “it takes a village to raise a child”. Administration at Wm. E. Hay Stettler Secondary Campus and Stettler Outreach School have partnerships with Caring and Resilient Students, the RCMP, the Heartland Youth Centre, Family Community Support Services, the Family Resource Network, Communities Against Abuse and Alberta Health Services Mental Health. As a member of the [Circle of Supports](#) in the Stettler Community, we work to support our students and their families in every way possible.

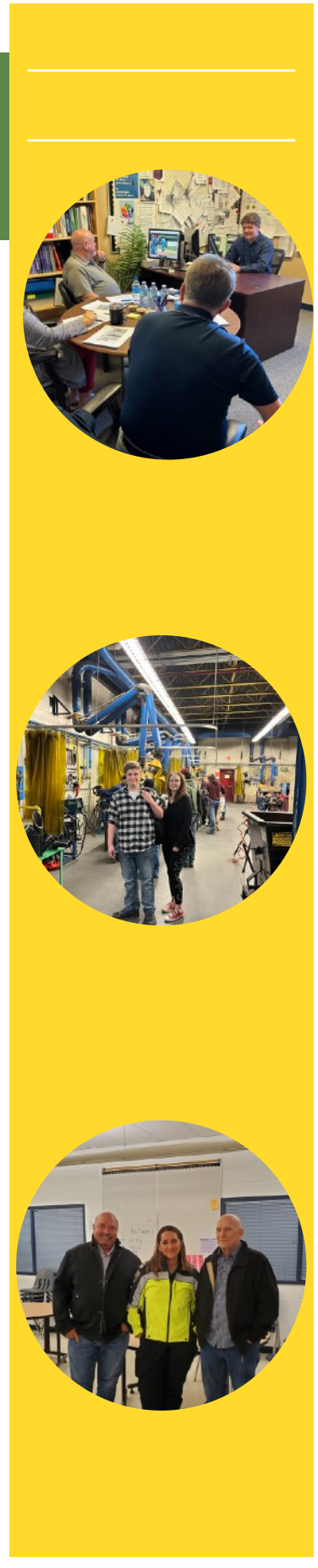
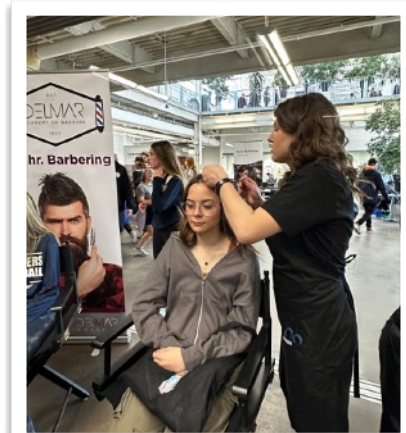
5411 50th Ave Stettler, AB

403 742-3466

CAREER PREPARATION

Did you know?

- ▶ Wm. E. Hay Stettler Secondary Campus maintains a focus on career preparation through our Portfolio Program.
 - ▶ All students from grade 9-12 build and update a Career Portfolio that showcases their strengths, abilities, achievements, interests and career ideas.
 - ▶ In grade 12, each student presents their portfolio to a panelist of community members who have experience in the career pathway each student wishes to pursue. These presentations give first hand experience of what a real job interview in their future career path would feel like.
- ▶ This year, we took all of our grade 10 and 11 students to Red Deer Polytechnic's Career Expo.
- ▶ Students at Wm. E. Hay can receive post secondary credits while still being a high school student through our Dual Credit Program!
- ▶ Twenty-two students are enrolled in the Registered Apprenticeship program and are working towards their first year of apprenticeship while still in high school!



5411 50th Ave Stettler, AB

403 742-3466

Fine Arts

Wm. E. Hay Stettler Secondary Campus and Stettler Outreach School have incredibly strong Fine Arts Programs.

Students are able to enrol in Band, Drama, Digital Photography, Art and Communications Technology courses.

In addition, we offer Theatre Arts classes outside of school time so that students can access fine arts despite demanding schedules.

Our students create productions and performances for our school community and the greater community.

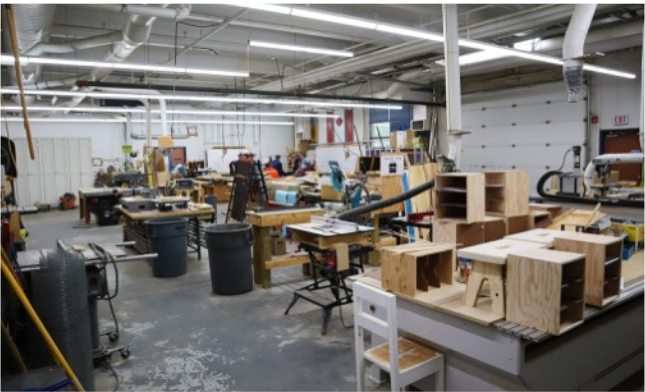


5411 50th Ave Stettler, AB

403 742-3466

CTS Programming

- We take pride in our CTS offerings for students with six fully equipped classrooms and expert level teachers.



OFF CAMPUS PROGRAMMING

In addition to our CTS course offerings run by journeyman teachers, we also offer Off Campus Experiences of Green Certificate, RAP and Work Experience for students to earn credits towards their high school diploma while also working to gain experience and knowledge in their potential career pathway.

Engaging the Public

In order to determine our goals, our administrative team has been actively working with staff to identify areas of focus.

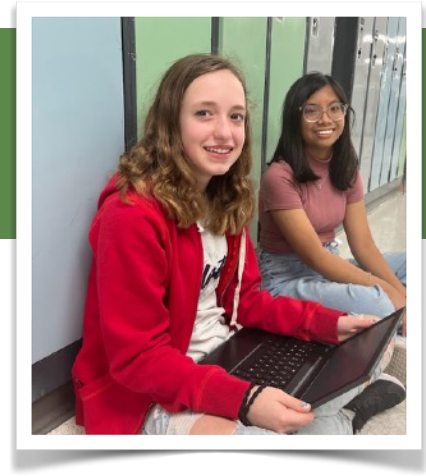
Through the past two years, our staff and students have been working collaboratively to determine a new school mantra to unite the school community around a common purpose. The story can be found here: <https://www.youtube.com/watch?v=GdgBSCvkKRo>



In 2023-2024, our Professional Learning has focused on defining the skills and characteristics that our staff and must demonstrate in order to help students “Ignite their Flame”. We meet each month with our Student Focus Group, a broad representation of our student body from grades 7-12 to gain student insight on our goals and work. Our School Council meets monthly to and have been involved in the school visioning and mantra work, as well as providing guidance on school goals.



BOARD PRIORITY: LITERACY



Focus: Literacy

Strategies:

- ▶ Creation of Literacy Foundations for struggling grade 7 and 8 students to ensure support as a result of learning disruption through COVID-19. This course is taught by the Student Services Coordinator.
- ▶ Literacy Enhancement 9 for all grade 9 students to increase the amount of literacy time by 75 hours for each grade 9 student.
- ▶ 3T Testing
- ▶ Literacy Professional Learning for all 7-9 staff

Success Measures:

- ▶ Increased Diploma and PAT results
- ▶ Improvements in 3T Testing results
- ▶ Success rates in ELA 30-1 and 30-2

Outcomes:

- ▶ Continued high level of High School Completion Rates

Budget Supports:

- ▶ Staff Training:
 - ▶ 3T Tests
- ▶ FTE for Literacy Foundations and Literacy Enhancement

Responsibility:

- ▶ School Administration
- ▶ Teaching and Support Staff

Academic Achievement: PAT results

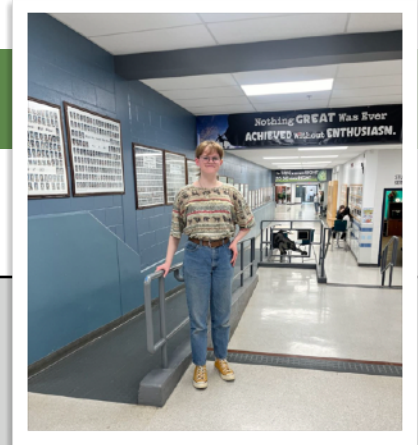
PAT Course by Course Results by Number Enrolled	Results (in percentages)												
	2018		2019		2020		2021		2022				
	A	E	A	E	A	E	A	E	A	E	A	E	
English Language Arts 9	School	70.3	5.9	70.0	4.4	n/a	n/a	n/a	n/a	53.1	9.9		
	Authority	75.4	9.3	71.6	11.8	n/a	n/a	n/a	n/a	74.1	8.2		
	Province	76.1	14.7	75.1	14.7	n/a	n/a	n/a	n/a	69.6	12.9		
K&E English Language Arts 9	School	*	*	*	*	n/a	n/a	n/a	n/a	16.7	0.0		
	Authority	*	*	*	*	n/a	n/a	n/a	n/a	16.7	0.0		
	Province	55.7	5.9	57.4	5.4	n/a	n/a	n/a	n/a	50.5	5.0		
Mathematics 9	School	69.7	7.9	81.5	6.2	n/a	n/a	n/a	n/a	61.4	12.9		
	Authority	68.2	9.6	71.7	11.8	n/a	n/a	n/a	n/a	51.5	9.1		
	Province	59.2	15.0	60.0	19.0	n/a	n/a	n/a	n/a	53.0	19.7		
K&E Mathematics 9	School	89.7	37.9	74.1	11.1	n/a	n/a	n/a	n/a	56.0	4.0		
	Authority	87.5	34.4	74.2	9.7	n/a	n/a	n/a	n/a	59.3	7.4		
	Province	57.4	13.6	59.6	13.2	n/a	n/a	n/a	n/a	55.3	11.1		
Science 9	School	76.0	12.0	74.7	15.4	n/a	n/a	n/a	n/a	81.6	27.6		
	Authority	78.2	14.4	75.6	17.9	n/a	n/a	n/a	n/a	79.3	22.0		
	Province	75.7	24.4	75.2	26.4	n/a	n/a	n/a	n/a	68.0	22.6		
K&E Science 9	School	*	*	*	*	n/a	n/a	n/a	n/a	25.0	0.0		
	Authority	*	*	*	*	n/a	n/a	n/a	n/a	25.0	0.0		
	Province	84.8	12.3	81.7	10.7	n/a	n/a	n/a	n/a	57.6	11.0		
Social Studies 9	School	55.4	9.9	58.2	11.0	n/a	n/a	n/a	n/a	61.1	12.2		
	Authority	64.0	10.3	62.6	12.3	n/a	n/a	n/a	n/a	63.6	11.0		
	Province	66.7	21.5	68.7	20.8	n/a	n/a	n/a	n/a	60.8	17.2		
K&E Social Studies 9	School	*	*	*	*	n/a	n/a	n/a	n/a	12.5	0.0		
	Authority	*	*	*	*	n/a	n/a	n/a	n/a	12.5	0.0		
	Province	55.2	14.2	55.9	15.0	n/a	n/a	n/a	n/a	53.2	14.1		

Results: Language Arts 9: Acceptable - 13.5% higher than Provincial, Standard of Excellence - 3.3% below Provincial
 Mathematics 9: Acceptable - 8.4% higher than Provincial, Standard of Excellence - 3.8% below Provincial
 Science 9: Acceptable - 13.6% higher than Provincial, Standard of Excellence - 5% above Provincial
 Social Studies 9: Acceptable - 0.3% higher than Provincial, Standard of Excellence - 5% below Provincial

- Strategies:
- Keep doing the great things are we doing in classrooms
 - More standard of excellence practice



BOARD PRIORITY: NUMERACY



Focus: Numeracy

Success Measures:

- ▶ Diploma and PAT results
- ▶ Students finding success with numeracy foundations

Strategies:

- Creation of Numeracy foundations for grade 7 and 8 students
- Increased Math time for grade 7 and 8 students
- Math Enhancement in grade 9-12
- Investigating new numeracy assessments to monitor student growth

Budget Supports:

- ▶ FTE For Numeracy Foundations and Math Enhancement

Responsibility:

- ▶ School Administration
- ▶ Team Leaders
- ▶ Teaching and Support Staff

BOARD PRIORITY: STUDENT ENGAGEMENT

Focus: First Nation, Metis and Inuit Student Success

Success Measures:

- ▶ Increase in High School Completion rates for FNMI students

Strategies:

- Accurately identifying all FNMI student population
- Utilizing the Indigenous Learning Committee to implement resources during Teacher Advisor
- Continuing to focus on individual program planning for students

FNMI Results

Assurance Domain	Measure	William E Hoy Composite High (FNMI)			Alberta (FNMI)			Measures Evaluation		
		Current Result	Prev Year Result	Prev 5 Year Average	Current Result	Prev Year Result	Prev 5 Year Average	Achievement	Improvement	Overall
Student Growth and Achievement	Student Learning Engagement	n/a	n/a	n/a	n/a	n/a	n/a	n/a	n/a	n/a
	Citizenship	n/a	n/a	n/a	n/a	n/a	n/a	n/a	n/a	n/a
	5-year High School Completion	*	*	75.4	88.8	82.0	58.4	*	*	*
	5-year High School Completion	78.7	80.0	60.0	68.8	68.1	65.8	Low	Maintained	Stable
	PAT Acceptable	n/a	n/a	75.0	n/a	n/a	54.0	n/a	n/a	n/a
	PAT Excellence	n/a	n/a	2.5	n/a	n/a	7.4	n/a	n/a	n/a
Teaching & Learning	Diploma Acceptable	n/a	n/a	60.0	n/a	n/a	77.2	n/a	n/a	n/a
	Diploma Excellence	n/a	n/a	0.0	n/a	n/a	11.4	n/a	n/a	n/a
	Education Quality	n/a	n/a	n/a	n/a	n/a	n/a	n/a	n/a	n/a
Learning Supports	Welcoming, Caring, Respectful and Safe Learning Environments (W-C-R-S-L-E)	n/a	n/a	n/a	n/a	n/a	n/a	n/a	n/a	n/a
	Access to Supports and Services	n/a	n/a	n/a	n/a	n/a	n/a	n/a	n/a	n/a
Governance	Parental Involvement	n/a	n/a	n/a	n/a	n/a	n/a	n/a	n/a	n/a

Results

- Increase of 17.8% of 5 year High School Completion
- Exceeding the Provincial 5 year High School Completion by 10.7%

Strategies

- Accurately identifying all FNMI population
- Utilizing Mrs. Zimmermann and her collated resources in our TA classrooms to promote awareness and inclusivity in the classroom. Professional learning for all staff.
- Continually focus on individual program planning for students



BOARD PRIORITY: STUDENT ENGAGEMENT



Focus: School Culture

Creating consistency in high expectations, core beliefs, and values.

Success Measures:

- ▶ Common language used among staff and students regarding education
- ▶ Clear and regular communication of expectations, core beliefs and values to stakeholders

Outcomes:

- ▶ Student clarity and understanding of expectations
- ▶ Staff working towards common goals and upholding common standards for students achievement and student behaviour

Strategies:

- ▶ Allocate Professional Learning time for Teams to come together to establish shared standards for students achievement and behaviour
- ▶ Creation of Student Focus Group with meetings every two months to get student feedback on focus areas
- ▶ Team Leaders to build leadership capacity with administration and then focus building teacher leaders
- ▶ Focus on collective efficacy of staff through team work
- ▶ Student Behaviour Matrix

Budget Supports:

- ▶ Staff Wellness Budget Line and Student Wellness Budget Line
- ▶ Team Leaders Professional Learning Session

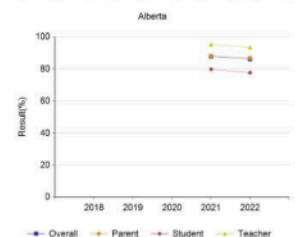
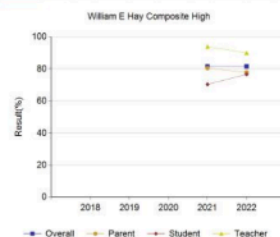
Responsibility:

- ▶ School Administration
- ▶ Team Leaders
- ▶ Teaching and Support Staff
- ▶ Students Union

Welcoming, Caring, Respectful and Safe

The percentage of teachers, parents and students who agree that their learning environments are welcoming, caring, respectful and safe.

	William E Hay Composite High										Alberta									
	2018		2019		2020		2021		2022		2018		2019		2020		2021		2022	
	N	%	N	%	N	%	N	%	N	%	N	%	N	%	N	%	N	%	N	%
Overall	n/a	n/a	n/a	n/a	n/a	n/a	241	87.6	255	81.6	n/a	n/a	n/a	n/a	n/a	n/a	231,091	87.9	249,941	86.1
Parent	n/a	n/a	n/a	n/a	n/a	n/a	24	80.5	17	77.9	n/a	n/a	n/a	n/a	n/a	n/a	30,980	88.2	31,715	86.9
Student	n/a	n/a	n/a	n/a	n/a	n/a	186	70.4	207	76.7	n/a	n/a	n/a	n/a	n/a	n/a	169,900	79.8	197,258	77.7
Teacher	n/a	n/a	n/a	n/a	n/a	n/a	31	94.0	31	90.1	n/a	n/a	n/a	n/a	n/a	n/a	30,211	95.3	30,968	92.6



Results: 4.5% below provincial

Strategies:

- In person Open House, interviews, Student Learner Conversations, etc.
- Encouraging staff communication with parents and families.



5411 50th Ave Stettler, AB

403 742-3466

BOARD PRIORITY: STUDENT ENGAGEMENT



Focus: Instructional Leadership

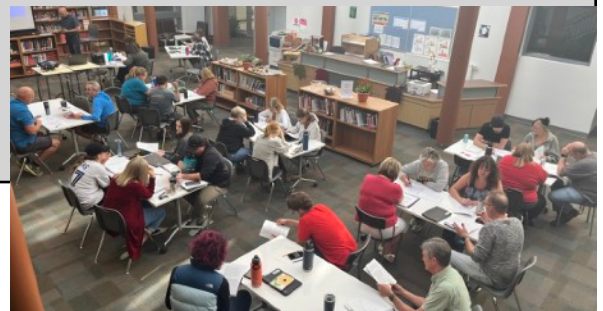
Creating consistency in high quality learning experiences for all students.

Success Measures:

- ▶ Common language used among staff and students regarding assessment
- ▶ Observation of high quality teaching strategies within each classroom
- ▶ Number of instructional visits by administration each year

Outcomes:

- ▶ High quality learning environments
- ▶ High quality teaching practices



Strategies:

- ▶ Allocate Professional Learning time for Teams to come together to establish shared standards for students achievement and assessment
- ▶ Administration “Spark” Visits to each classroom leaving feedback for teachers
- ▶ Team Leaders to build leadership capacity with administration and then focus building teacher leaders
- ▶ Focus on collective efficacy of staff through team work

Budget Supports:

- ▶ Executive Coaching Support with Stu Henry

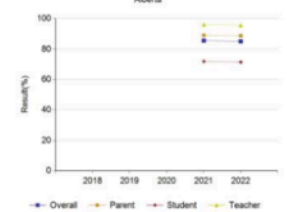
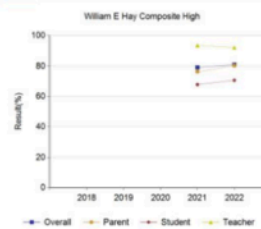
Responsibility:

- ▶ School Administration
- ▶ Team Leaders
- ▶ Teaching and Support Staff
- ▶ Students Union

Student Learning Engagement

The percentage of teachers, parents and students who agree that students are engaged in their learning at school.

	William E Hay Composite High									Alberta														
	2018			2019			2020			2021			2022			2018		2019		2020		2021		2022
	N	%	N	%	N	%	N	%	N	%	Achievement	Improvement	Overall	N	%	N	%	N	%	N	%	N	%	
Overall	n/a	n/a	n/a	n/a	n/a	n/a	241	79.2	258	81.0	n/a	n/a	n/a	n/a	n/a	n/a	n/a	n/a	n/a	230,898	85.6	249,740	85.1	
Parent	n/a	n/a	n/a	n/a	n/a	n/a	24	76.4	17	80.4	n/a	n/a	n/a	n/a	n/a	n/a	n/a	n/a	n/a	30,964	89.0	31,694	88.7	
Student	n/a	n/a	n/a	n/a	n/a	n/a	186	67.7	207	75.5	n/a	n/a	n/a	n/a	n/a	n/a	n/a	n/a	n/a	189,789	71.8	187,102	71.3	
Teacher	n/a	n/a	n/a	n/a	n/a	n/a	31	93.5	34	92.1	n/a	n/a	n/a	n/a	n/a	n/a	n/a	n/a	n/a	30,173	96.0	30,844	95.9	



Results: 4.1% below provincial Strategies:

- Continue building on the communication plan to engage all stakeholders in the



Our Education Plan will be shared with our School Council in September 2024 and shared out via Social Media, posted on our website and shared with parents through School Messenger in September.

Contact Us!



Mrs. M. Shepherd
Principal
mshpherd@clearview.ab.ca



Mrs. B. Fankhanel
Vice Principal
bfankhanel@clearview.ab.ca



Mr. Fleischhacker
Vice Principal
dfleischhacker@clearview.ab.ca

Clearview Public Schools

<https://wmehay.clearview.ab.ca/home>

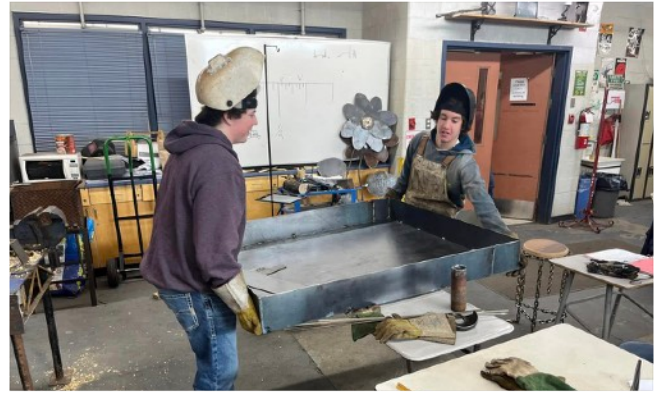
<https://www.facebook.com/wmehay>



5411 50th Ave Stettler, AB

403 742-3466

Ignite Your Flame



5411 50th Ave Stettler, AB

403 742-3466