

COVID-19 - Symptom Procedures for Parents

Wm. E. Hay Stettler Secondary Campus

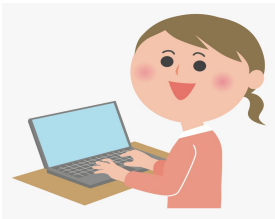
Parents/Guardians play an integral role in the screening process for children's daily involvement in school.

All processes are based on the most recent guidelines from Alberta Health Services.

What do I need to do?



1. Complete the [Screening Daily Checklist](#) each day before sending your child to school.



2. Report baseline symptoms if your child has pre-existing conditions (eg. asthma or allergies) on our Google Form - [Pre-existing Conditions Google Form](#)

What do I do if my child has or develops symptoms?



1. Prior to School:

- a. Students must stay at home.
- b. Contact Ms. McMillan at 403-742-3466 or at lmcmillan@clearview.ab.ca.

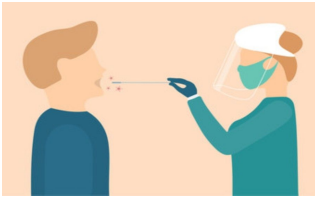
Ms. McMillan will provide parents with information on what Alberta Health Services requires for next steps.



2. During the School Day:

- a. Students notify their teacher.
- b. The classroom teacher will ensure that the child is taken to the infirmary.
- c. Ms. McMillan will contact parents for pick up.
- d. Upon parent arrival, parents will be provided with information on what Alberta Health Services requires for next steps.

My child is sick. What do we do next?



Alberta Health Services recommends that all individuals should get tested if you have COVID-19 symptoms.

1. Take the [AHS Online Self Assessment Tool](#) and follow instructions given.
2. Book a COVID-19 Test [online](#) and isolate until you receive results.

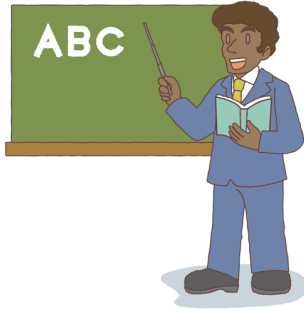
If you have any of these symptoms you are legally required to isolate for at least 10 days from the start of your symptoms or until they resolve, whichever is longer:

- Fever
- Cough (new cough or worsening chronic cough)
- Shortness of breath or difficulty breathing (new or worsening)
- Runny nose
- Sore throat

If you have any of these other symptoms, stay home and minimize your contact with others until your symptoms resolve:

- Chills
- Painful swallowing
- Stuffy nose
- Headache
- Muscle or joint aches
- Feeling unwell, fatigue or severe exhaustion
- Gastrointestinal symptoms (nausea, vomiting, diarrhea or unexplained loss of appetite) Loss of sense of smell or taste
- Conjunctivitis, commonly known as pink eye

When can my child return to school if they have COVID-19 like symptoms?



Students can return to school after experiencing a fever, cough, shortness of breath or difficulty breathing, running nose and sore throat:

1. With confirmation of a negative COVID-19 test AND no symptoms

OR

2. After 10 days of isolation

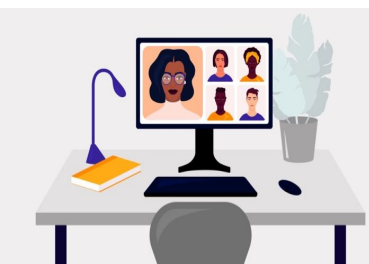
Students can return to school after experiencing chills, painful swallowing, stuffy nose, headache, muscle or joint aches, feeling unwell, fatigue or severe exhaustion, gastrointestinal symptoms (nausea, vomiting, diarrhea or unexplained loss of appetite), loss of sense of smell or taste or conjunctivitis:

1. Once symptoms resolve

Contact Ms. McMillan at the school to communicate your negative COVID-19 result at 403 742-3466 or lmcmillan@clearview.ab.ca

Please Note: Other asymptomatic members of the home are able to attend school.

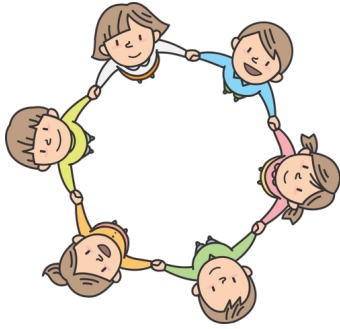
What about my child's learning?



Students who are at home due to required isolation **will be supported by their classroom teacher.**

Students who are isolating will be **contacted directly** via school email by their child's classroom teacher(s) to develop a support plan for their learning. Parents can also contact their child's teacher at any time. A staff directory is located on our [website](#).

What should I consider now?



Develop a family plan.

What will you do if your child comes down with symptoms?
Work, children, family situations can all pose challenges when a child comes down with symptoms.

Considering a plan now is important.

Where should I go for more information?

Parents can contact Health Link at 811 or visit the Alberta Health Services Website at albertahealthservices.ca for more information.

An advertisement for Health Link 811. The background is a dark teal color. On the left, the text reads "One number. All your health advice." followed by the "811 Health Link Health Advice 24/7" logo and the "MyHealth.Alberta.ca" logo. On the right, there is a large orange circular graphic with a white telephone handset icon and the number "811" in white. At the bottom, there is a dark grey bar containing the "Alberta Health Services" logo, the slogan "Healthy Albertans. Healthy Communities. Together.", a "100" anniversary logo, and the website address "MyHealth.Alberta.ca/811".

Appendix E: Management of individuals who are tested for COVID-19

Symptoms	COVID-19 Test Result:	Management of Individual:	Management of Individual's Close Contacts*:
Symptomatic	Positive	Isolate for a minimum 10 days or until symptoms resolve, whichever is longer.	Quarantine for 14 days from last exposure
	Negative	Stay home until symptoms resolve. Except: if identified as a close contact of a confirmed case <ul style="list-style-type: none"> • Quarantine for 14 days since the last exposure (even with a negative result) 	N/A
Asymptomatic	Positive	Isolate for a minimum of 10 days from the collection date of the swab.	Quarantine for 14 days from last exposure
	Negative	No isolation required. Except: if identified as a close contact of a confirmed case <ul style="list-style-type: none"> • Quarantine for 14 days since the last exposure (even with a negative result) 	N/A

*Close contacts:

- Provide direct care for an individual with COVID-19 or who had similar close physical contact OR
- Had close prolonged contact OR
- Had direct contact with infectious body fluids of an individual with COVID-19 (i.e., was coughed or sneezed on).

NOTES:

- **Individuals WILL NOT receive written or email documentation of their results. Those who wish to access their results directly should sign up for MyHealth Records.**
- **There is not a requirement to provide evidence of negative results prior to returning to school.**
- **AHS Public Health will contact all confirmed cases and their close contacts and provide them clear direction.**
- **AHS Public Health will notify the school of a positive case.**
- **Individuals with COVID-19 symptoms are encouraged to be tested using the [AHS Online Self-Assessment tool](#)**